

National Oesophago-Gastric Cancer Audit

Guy's and St Thomas' NHS Foundation Trust

South East London, Cancer Alliance

Management of High Grade Dysplasia patients

Time period: 2018-22

	Cancer Alliance		National
Number of High Grade Dysplasia patients in audit	13		1120
	Cancer Alliance		National
Method of Diagnosis			
– First diagnosis confirmed by second pathologist	N/A	100.0%	90.0%
Treatment planning			
– HGD plan discussed at MDT	N/A	92.3%	93.0%
– Treatment plan for active treatment	N/A	91.7%	82.0%
First treatment			
– Endoscopic therapy (such as endoscopic resection)	N/A	83.3%	78.0%
– Surveillance	N/A	0.0%	11.0%

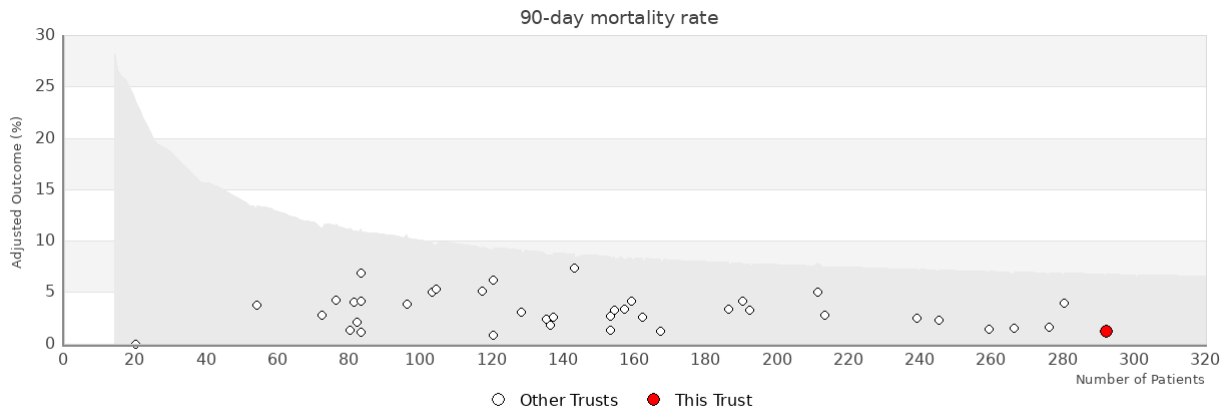
NOTE: Percentages have been calculated based on the number of patients with recorded data for each variable and not the total number of patients in the Cancer Alliance.

Management of oesophago-gastric cancer patients

Time period: 2020-2022

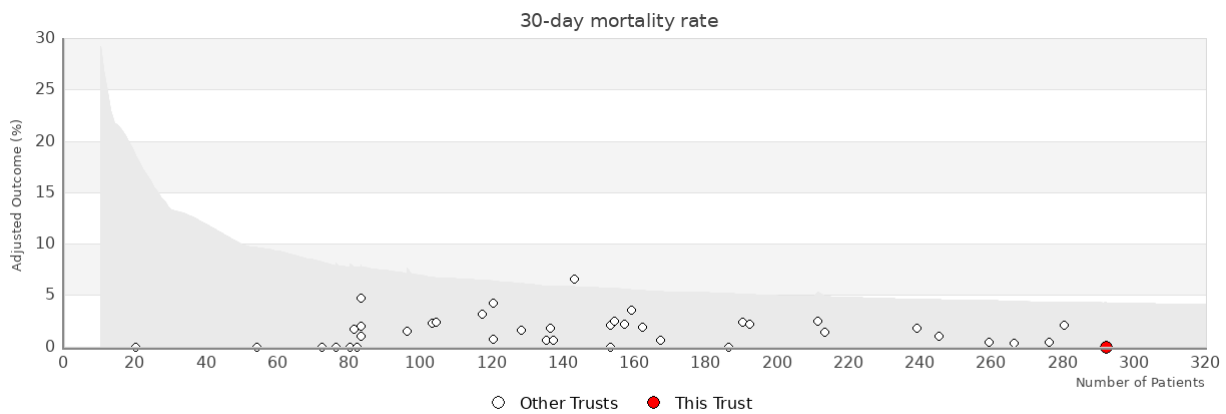
	Organisation		National
Number of oesophago-gastric (OG) cancer patients in audit	31		19,865
Case ascertainment for OG cancer (%)	65%		
Method of Diagnosis			
– Patients diagnosed after an emergency admission** ** Percent figure accounts for differences in mix of patients across organisations	10	3.4%	13.1%
– Patients with referral source reported as unknown	5	16.1%	1.4%
Pre-treatment staging of cancer			
– Patients having staging CT scan recorded	28	90.3%	94.0%
Treatment planning			
– Patients having a plan for curative treatment	26	83.9%	37.2%
– Patients having a plan for non-curative treatment	5	16.1%	62.8%
– Patients with non-curative plans having chemotherapy or radiotherapy	N/A		34.7%

90-day mortality rate



Trust	Number	Adjusted %
Guy's and St Thomas' NHS Foundation Trust	292	1.2

30-day mortality rate



Trust	Number	Adjusted %
Guy's and St Thomas' NHS Foundation Trust	292	0

Outcomes for OG cancer patients who have curative surgery

Time period: 2019-2022

	Organisation	National
Number of patients having surgery	292	5452
Length of stay, median (days)	9	10
Operations in which 15 or more lymph nodes were examined (%)	95.9%	90.1%
30-day postoperative mortality (%)	0.0%	1.5%
90-day postoperative mortality (%)	1.2%	2.9%
Oesophageal surgery		
Number of patients having oesophageal surgery	197	N/A
Oesophageal patients with positive longitudinal margins (%)	9.5%	4.9%
Oesophageal patients with positive circumferential margins (%)	27.9%	21.5%
Gastric surgery		
Number of patients having gastric surgery	95	N/A
Gastric patients with positive longitudinal margins (%)	8.1%	9.8%